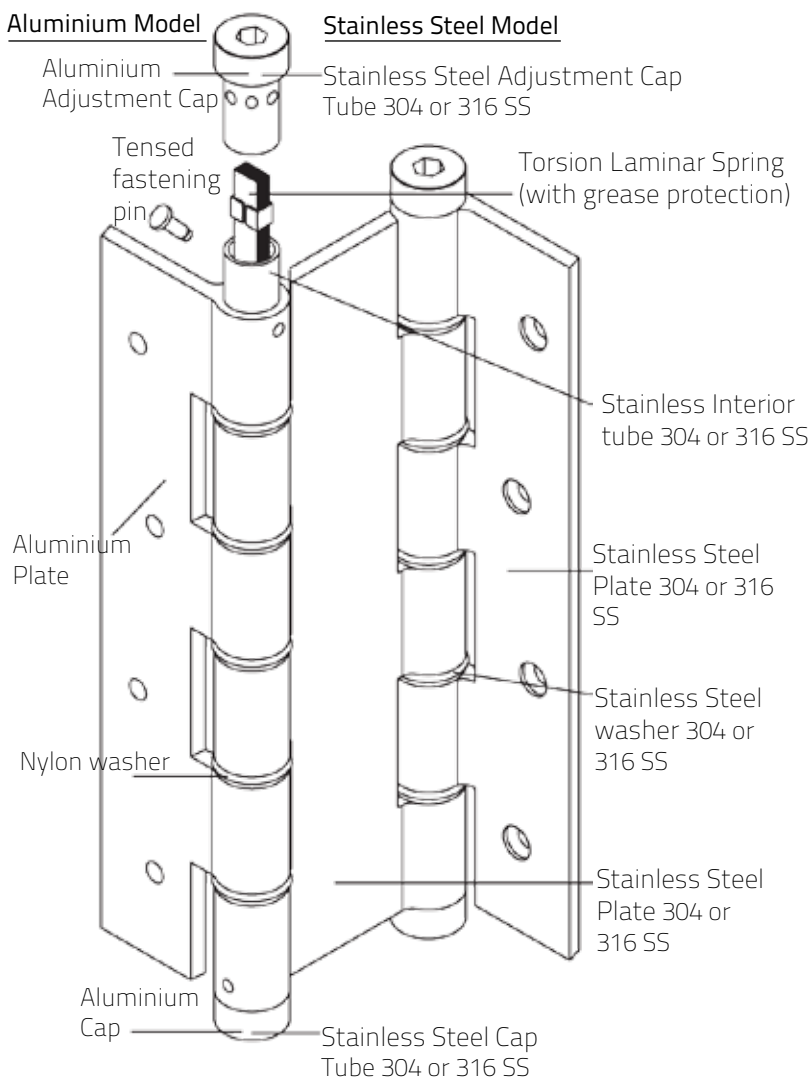


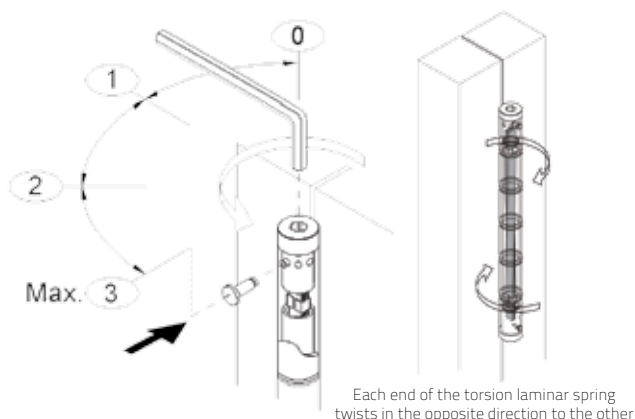
Spring Hinge DA180 Technical Data

Aluminium, Zinc, 304 & 316 Stainless Steel

Anatomy of a Double Action Spring Hinge:



DA180 Adjustment Instructions:



Dimensional Information:

All measurements in mm

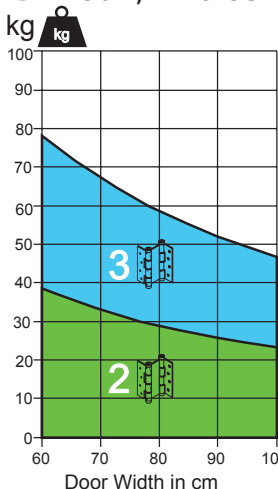
Model	DA180 SS, S3	DA180 ZP	DA180 A	DA180 E	DA180 AA
A	133	133	113	96	157
B	40	40	40	27	48.5
C	53	53	53	42	60
D	Ø18	Ø16	Ø16	Ø16	Ø16
E	180	180	180	180	180
Leaf Thickness					
	3	3	4	4	4
Max Door Thickness					
	40	40	40	30	50

Where DA180 is being used

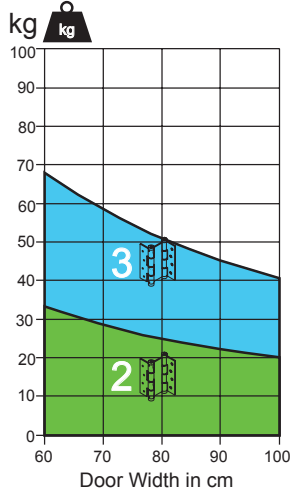
- Residential Environments
- Apartments Buildings
- Hotels of All Sizes
- Commercial Environments
- Industrial Estates
- Hospitals
- Restaurant Kitchens
- Boats, Cars & Trains

Number of Hinges Required and Position

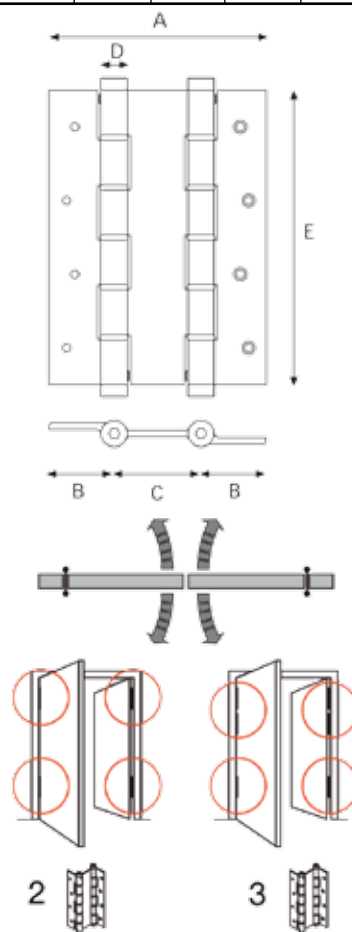
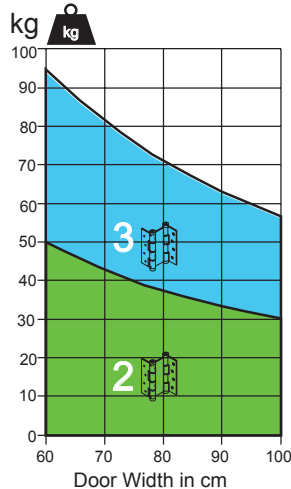
DA180A, ZP & SS



DA180AA



DA180E



Spring Hinge DA180 Functional Data

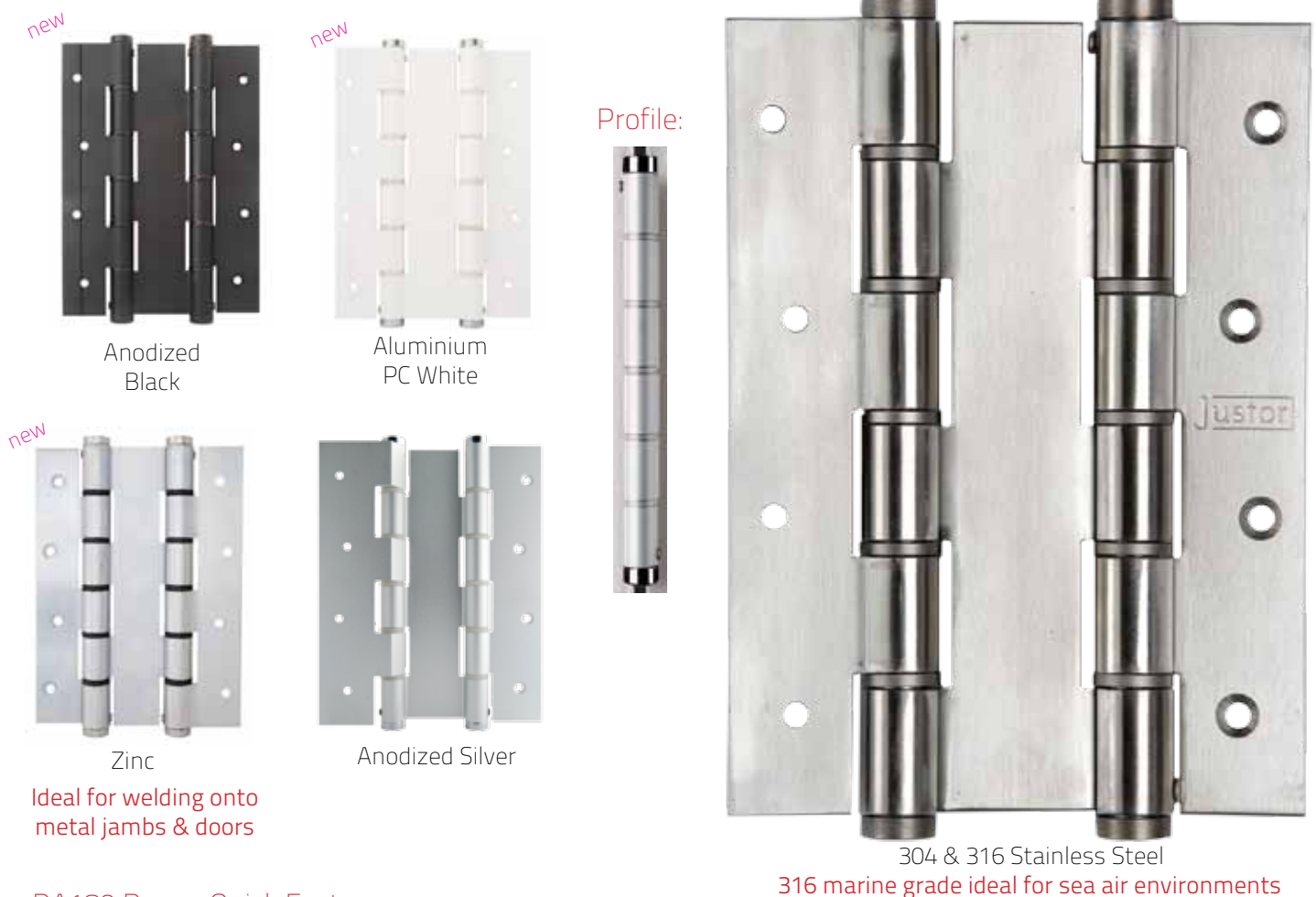
Aluminium, Zinc, 304 & 316 Stainless Steel

No need for unsightly door closers or expensive pivot kits, the DA180 Double Action Spring Hinge is sleek, stylish and simple. Made in Spain by Justor, the DA180 is highly functional and totally adjustable, ideal for all doors that weigh up to 95Kg (refer graph).

Simplistically the function of the DA180 double action spring hinge is to bring a door that swings open in both directions back to the centre position i.e. a kitchen door in a restaurant. Made out of Aluminium, Zinc or Stainless Steel the DA180 Double Action Spring Hinges are ideal for internal or external applications, wherever a dual swing door (a door that swings in both directions such as a pivot door does) needs to return to a centre position without assistance.

Once installed the DA180 spring hinge can be adjusted to bring the door back quickly or slowly in either direction. The DA180 can also be adjusted to bring the door back quickly in one direction and slowly in the other direction. Alternatively, by reversing the tension on the DA180, the spring can be set to bring the door back to the centre position from one direction but assist in opening the door in the other direction. The DA180 has multiple tension settings and adjustments can be made without having to take the door off.

An added advantage of the DA180 is its appearance; aesthetically pleasing to the eye, it is sleek and has clean lines. Cost effective and highly functional, it is a real and effective alternative to traditional and unsightly double action closers and expensive pivot sets. It's guaranteed for 2 years and available in a range of finishes; the Justor DA180 is hard to overlook.



Ideal for welding onto metal jambs & doors

DA180 Range Quick Facts:

- Spring Resistance + 500,000 cycles
- Resistant to extreme Climatic Conditions (Cold and Humidity)
- Maximum resistance to bending
- Torsion Spring not a Coil Spring
- Up to 95Kg in Door Weight Per Door
- Variable Door Movement Strength
- Highly Efficient 180° Working Aperture
- Solid and Stylish Design
- For Wood, Aluminium or metal Doors
- Ideal for Restaurants and Kitchens
- No Periodical Greasing Required
- 2 Year Manufacturer's Guarantee

Order Codes:

Base Material: Aluminium

- | | |
|-----------------------------------|------------------------------------|
| ■ BIDA180AAS - Anodized Silver | (max 50mm thick door) |
| ■ BIDA180AS - Anodized Silver | (max 40mm thick door) |
| ■ BIDA180BLK - Anodized Black | (max 40mm thick door) - new |
| ■ BIDA180WHT - Aluminium PC White | (max 40mm thick door) - new |
| ■ BIDA180AB - Anodized Bronze | (max 40mm thick door) (by Request) |
| ■ BIDA180AG - Anodized Gold | (max 40mm thick door) (by Request) |
| ■ BIDA180EAS - Anodized Silver | (max 30mm thick door) |
| ■ BIDA180EAB - Anodized Bronze | (max 30mm thick door) |

Base Material: Stainless Steel

- BIDA180SS - 304 Marine Grade SS (max 40mm thick door)
- BIDA180S3 - 316 Marine Grade SS (max 40mm thick door) - **new**

Base Material: Zinc

- BIDA180ZP - Zinc (max 40mm thick door) - **new**